



Enclosure type:  
4X "Watertight"

ISO 9001:2008 / ISO 14001 : 2004  
EUROPE CE CERTIFICATION

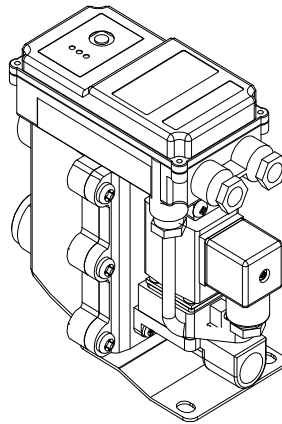


## Technical Data

## Condensate Auto Drain Trap

## Standard

**Model : DM-5N**



# Condensate Auto Drain Trap

## DRAIN MASTER S

### TECHNICAL DATA

<b>Model</b>	<b>DM - 5N</b>		
Order Ref.	DM 5N CA		
Working Pressure (min/max)	0.8 ~16 bar		
Temperature (min/max)	+1 °C ~ +80 °C		
Safety Class	IP 65		
Condensate Feed	G1/2"(NPT 1/2") x 2 point		
Venting Line	1/2"(NPT 1/2")		
Condensate Discharge	G3/8"(NPT 3/8")		
Weight (empty)	1.3 kg		
Scope of Application	Oil-Free Condensate or Oil-Contaminated Condensate		
Material	Housing	Aluminum, Hard coated	
	O-ring	NBR	
	Diaphragm	AU	
	PCB Board Casing	ABS	

	Climatic zone	Peak compressor performance m <sup>3</sup> /min	Peak dryer performance m <sup>3</sup> /min	Peak filter performance m <sup>3</sup> /min
<b>DM-5N</b>	Green	8	16	80
	Blue	7	14	70
	Red	5	10	50

\***Green** –Dry and cool climate(such as in Northern Europe, Canada, Northern states of the USA, Central Asia)

\***Blue** –temperate climate(such as in Central and Southern Europe, Central America)

\***Red** –humid, tropical climate(such as in the coastal regions of South-East Asia, Oceania, Amazon and Congo regions)

### Discharge Capacity of DRAIN MASTER S (DM-5N)

Working pressure	1 bar	2 bar	3 bar	4 bar	5 bar	6 bar	7 bar
Peak load (l/h)	21	24	28		32		

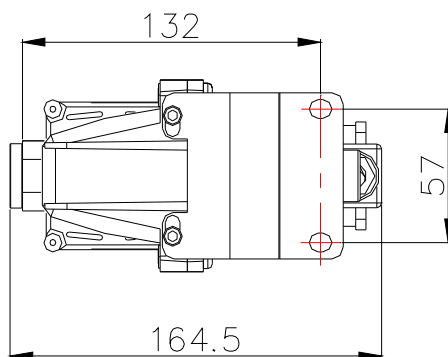
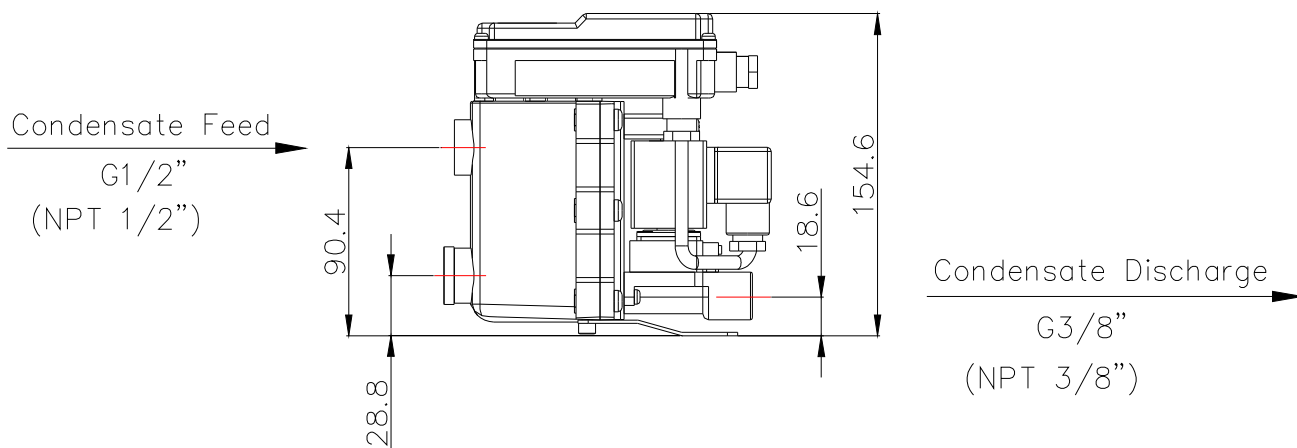
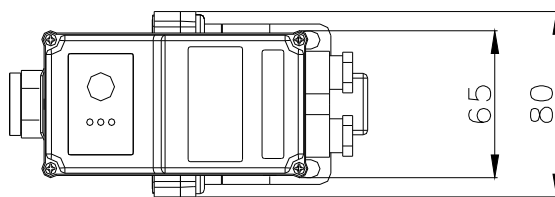
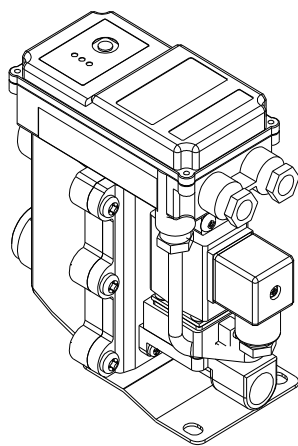
Voltage	Standard	100~240Vac(Free Voltage) / 50~60Hz		
	Order Voltages	24Vac.48Vac /24Vdc.48Vdc		
Power Input	15 VA	Fuse protection(normal lag)		0.5 A
Cable cross section	Ø 6.0 ~ 8.0 mm; 3 x 0.75mm			

### Thermostatically controlled heating (Option)

Designation	Heater Unit	
Order Ref.	A DM00-1	A DM00-2
Power	220Vac/50~60Hz/125W	110Vac/50~60Hz/125W
Operating Pressure(max)	25 bar	
with heating unit and proper insulation; down to -25 °C		

**DIMENSION**

**DRAIN MASTER S (DM-5N)**





ISO 9001:2008 / ISO 14001 : 2004  
EUROPE CE CERTIFICATION

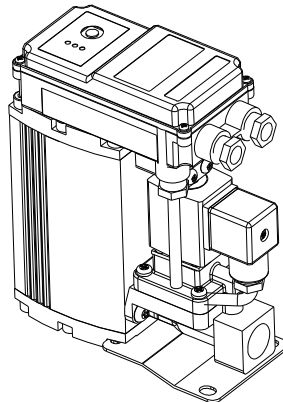


## Technical Data

## Condensate Auto Drain Trap

## Standard

**Model : DM-15**



# Condensate Auto Drain Trap

## DRAIN MASTER S

### TECHNICAL DATA

<b>Model</b>	<b>DM - 15</b>		
Order Ref.	DM 15 CA		
Working Pressure (min/max)	0.8 ~16 bar		
Temperature (min/max)	+1 °C ~ +80 °C		
Safety Class	IP 65		
Condensate Feed	G1/2"(NPT 1/2") x 2 point		
Venting Line	1/2"(NPT 1/2")		
Condensate Discharge	G1/2"(NPT 1/2")		
Weight (empty)	1.65 kg		
Scope of Application	Oil-Free Condensate or Oil-Contaminated Condensate		
Material	Housing	Aluminum, Hard coated	
	O-ring	NBR	
	Diaphragm	AU	
	PCB Board Casing	ABS	

	Climatic zone	Peak compressor performance m <sup>3</sup> /min	Peak dryer performance m <sup>3</sup> /min	Peak filter performance m <sup>3</sup> /min
<b>DM-15</b>	Green	24	48	240
	Blue	21	42	210
	Red	15	30	150

\***Green** –Dry and cool climate(such as in Northern Europe, Canada, Northern states of the USA, Central Asia)

\***Blue** –temperate climate(such as in Central and Southern Europe, Central America)

\***Red** –humid, tropical climate(such as in the coastal regions of South-East Asia, Oceania, Amazon and Congo regions)

### Discharge Capacity of DRAIN MASTER S (DM-15)

Working pressure	1 bar	2 bar	3 bar	4 bar	5 bar	6 bar	7 bar
Peak load (l/h)	43	50		59		68	

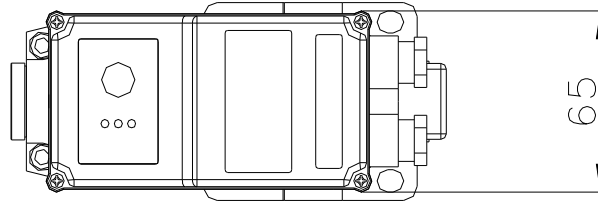
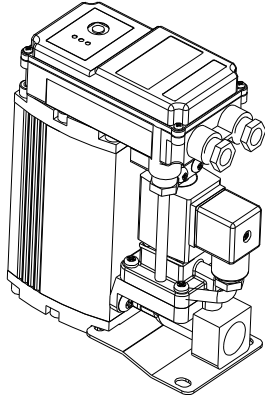
Voltage	Standard	100~240Vac(Free Voltage) / 50~60Hz	
	Order Voltages	24Vac.48Vac /24Vdc.48Vdc	
Power Input	15 VA	Fuse protection(normal lag)	0.5 A
Cable cross section	Ø 6.0 ~ 8.0 mm; 3 x 0.75mm		

### Thermostatically controlled heating (Option)

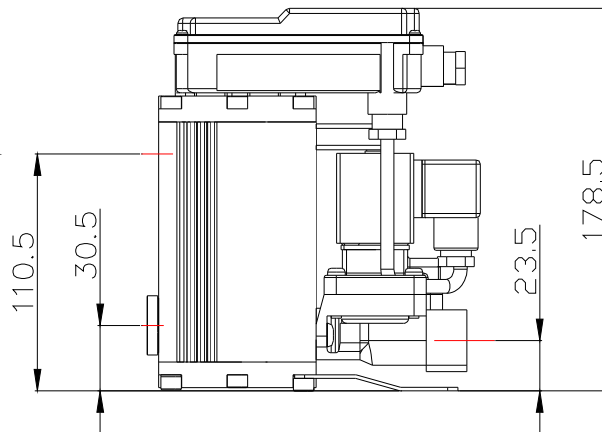
Designation	Heater Unit	
Order Ref.	A DM00-1	A DM00-2
Power	220Vac/50~60Hz/125W	110Vac/50~60Hz/125W
Operating Pressure(max)	25 bar	
with heating unit and proper insulation; down to -25 °C		

**DIMENSION**

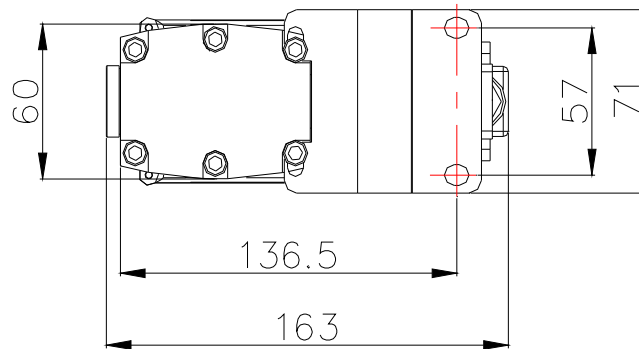
**DRAIN MASTER S (DM-15)**



Condensate Feed  
G1/2"  
(NPT 1/2")



Condensate Discharge  
G1/2"  
(NPT 1/2")



Subject to technical changes without prior notice, errors not excluded.



ISO 9001:2008 / ISO 14001 : 2004  
EUROPE CE CERTIFICATION

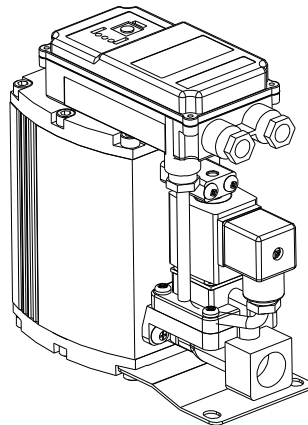


## Technical Data

## Condensate Auto Drain Trap

## Standard

**Model : DM-50**



# Condensate Auto Drain Trap

## DRAIN MASTER S

### TECHNICAL DATA

<b>Model</b>	<b>DM - 50</b>		
Order Ref.	DM 50 CA		
Working Pressure (min/max)	0.8 ~16 bar		
Temperature (min/max)	+1 °C ~ +80 °C		
Safety Class	IP 65		
Condensate Feed	G1/2"(NPT 1/2") x 2 point		
Venting Line	1/2"(NPT 1/2")		
Condensate Discharge	G1/2"(NPT 1/2")		
Weight (empty)	2.2 kg		
Scope of Application	Oil-Free Condensate or Oil-Contaminated Condensate		
Material	Housing	Aluminum, Hard coated	
	O-ring	NBR	
	Diaphragm	AU	
	PCB Board Casing	ABS	

	Climatic zone	Peak compressor performance m <sup>3</sup> /min	Peak dryer performance m <sup>3</sup> /min	Peak filter performance m <sup>3</sup> /min
<b>DM-50</b>	Green	80	160	800
	Blue	70	140	700
	Red	50	100	500

\***Green** –Dry and cool climate(such as in Northern Europe, Canada, Northern states of the USA, Central Asia)

\***Blue** –temperate climate(such as in Central and Southern Europe, Central America)

\***Red** –humid, tropical climate(such as in the coastal regions of South-East Asia, Oceania, Amazon and Congo regions)

### Discharge Capacity of DRAIN MASTER S (DM-50)

Working pressure	1 bar	2 bar	3 bar	4 bar	5 bar	6 bar	7 bar
Peak load (l/h)	85	108	126	142	158	174	192

Voltage	Standard	100~240Vac(Free Voltage) / 50~60Hz	
	Order Voltages	24Vac.48Vac /24Vdc.48Vdc	
Power Input	15 VA	Fuse protection(normal lag)	0.5 A
Cable cross section	Ø 6.0 ~ 8.0 mm; 3 x 0.75mm		

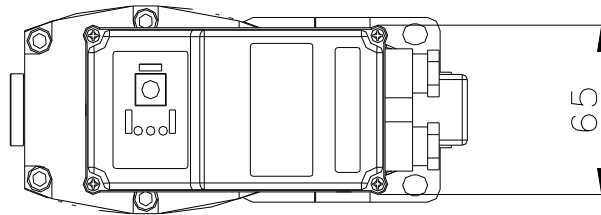
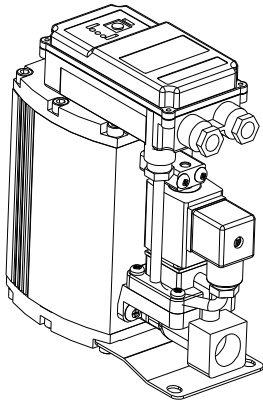
### Thermostatically controlled heating (Option)

Designation	Heater Unit	
Order Ref.	A DM00-1	A DM00-2
Power	220Vac/50~60Hz/125W	110Vac/50~60Hz/125W
Operating Pressure(max)	25 bar	
with heating unit and proper insulation; down to -25 °C		



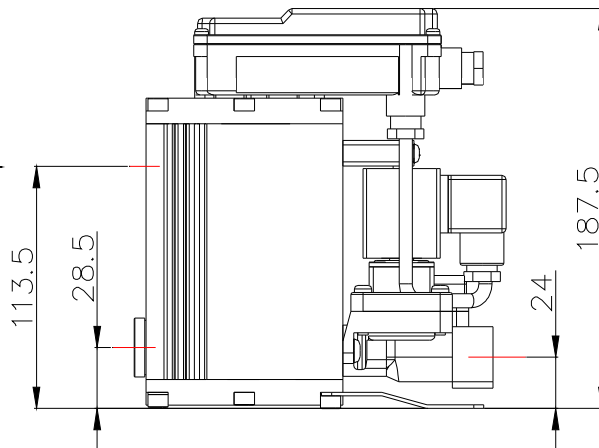
**DIMENSION**

**DRAIN MASTER S (DM-50)**



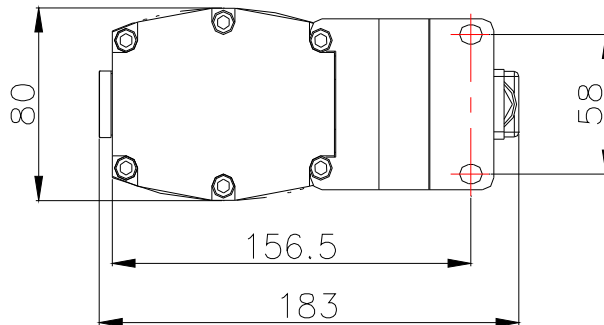
Condensate Feed

G1/2"  
(NPT 1/2")



Condensate Discharge

G1/2"  
(NPT 1/2")





ISO 9001:2008 / ISO 14001 : 2004  
EUROPE CE CERTIFICATION

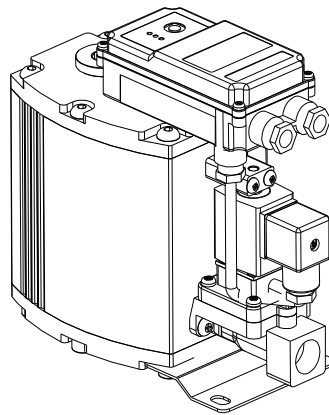


## Technical Data

## Condensate Auto Drain Trap

## Standard

**Model : DM-150**



# Condensate Auto Drain Trap

## DRAIN MASTER S

### TECHNICAL DATA

<b>Model</b>	<b>DM - 150</b>		
Order Ref.	DM 150 CA		
Working Pressure (min/max)	0.8 ~ 16 bar		
Temperature (min/max)	+1 °C ~ +80 °C		
Safety Class	IP 65		
Condensate Feed	G3/4"(NPT 3/4") x 3 point		
Venting Line	G3/4"(NPT 3/4")		
Condensate Discharge	G1/2"(NPT 1/2")		
Weight (empty)	3.9 kg		
Scope of Application	Oil-Free Condensate or Oil-Contaminated Condensate		
Material	Housing	Aluminum, Hard coated	
	O-ring	NBR	
	Diaphragm	AU	
	PCB Board Casing	ABS	

	Climatic zone	Peak compressor performance m <sup>3</sup> /min	Peak dryer performance m <sup>3</sup> /min	Peak filter performance m <sup>3</sup> /min
<b>DM-150</b>	Green	170	340	1700
	Blue	150	300	1500
	Red	105	210	1050

\***Green** –Dry and cool climate(such as in Northern Europe, Canada, Northern states of the USA, Central Asia)

\***Blue** –temperate climate(such as in Central and Southern Europe, Central America)

\***Red** –humid, tropical climate(such as in the coastal regions of South-East Asia, Oceania, Amazon and Congo regions)

### Discharge Capacity of DRAIN MASTER S (DM-150)

Working pressure	1 bar	2 bar	3 bar	4 bar	5 bar	6 bar	7 bar
Peak load (l/h)	180	210	240	275	310	352	400

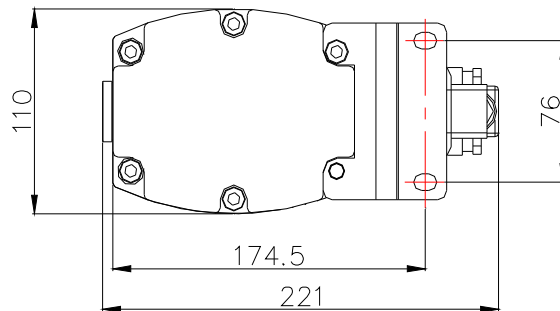
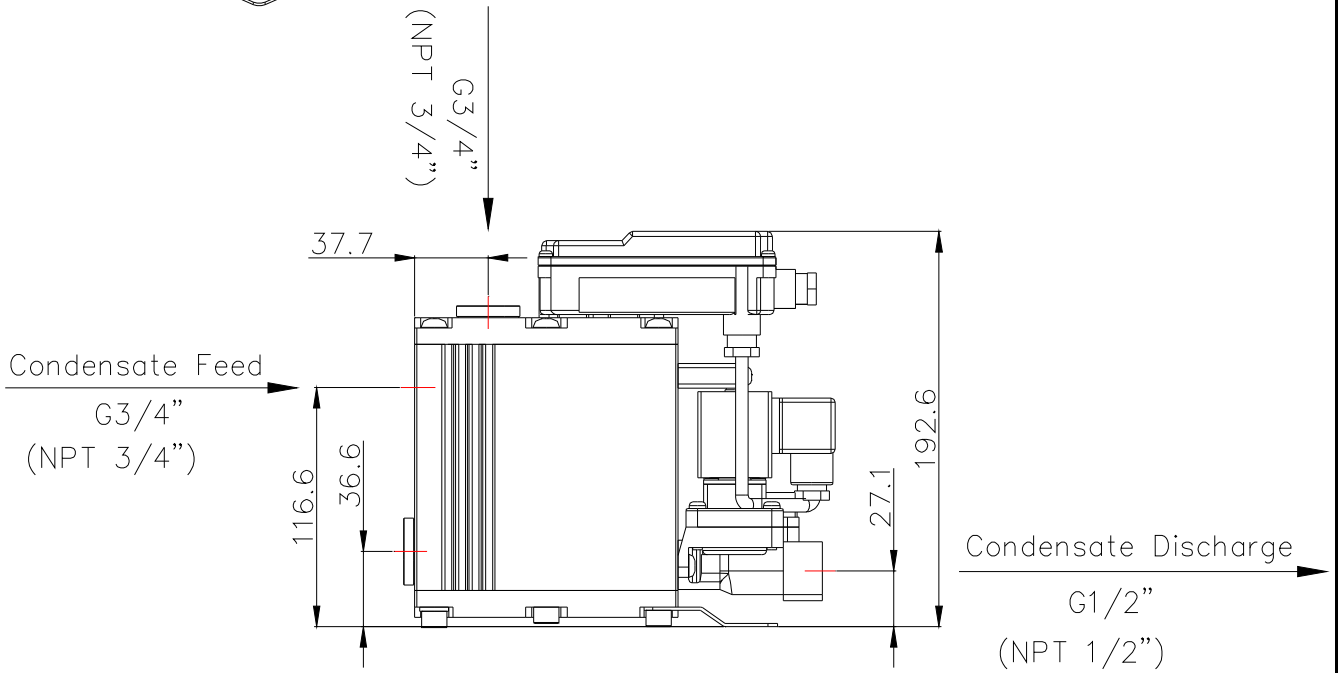
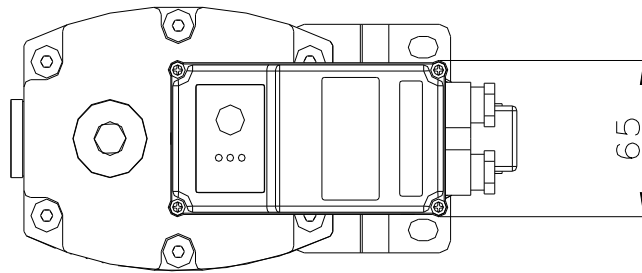
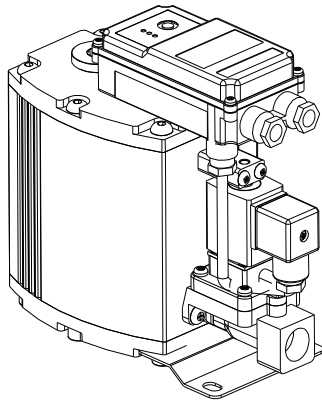
Voltage	Standard	100~240Vac(Free Voltage) / 50~60Hz	
	Order Voltages	24Vac.48Vac /24Vdc.48Vdc	
Power Input	15 VA	Fuse protection(normal lag)	0.5 A
Cable cross section	Ø 6.0 ~ 8.0 mm; 3 x 0.75mm		

### Thermostatically controlled heating (Option)

Designation	Heater Unit	
Order Ref.	A DM00-1	A DM00-2
Power	220Vac/50~60Hz/125W	110Vac/50~60Hz/125W
Operating Pressure(max)	25 bar	
with heating unit and proper insulation; down to -25 °C		

**DIMENSION**

**DRAIN MASTER S (DM-150)**



Subject to technical changes without prior notice, errors not excluded.



ISO 9001:2008 / ISO 14001 : 2004  
EUROPE CE CERTIFICATION

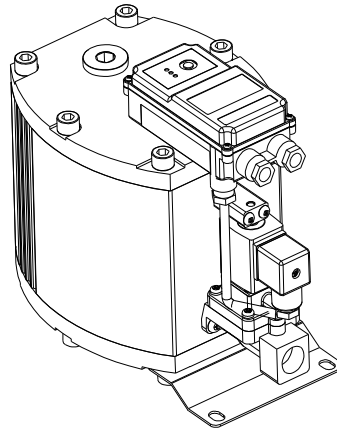


## Technical Data

## Condensate Auto Drain Trap

## Standard

**Model : DM-500**



# Condensate Auto Drain Trap

## DRAIN MASTER S

### TECHNICAL DATA

<b>Model</b>	<b>DM - 500</b>		
Order Ref.	DM 500 CA		
Working Pressure (min/max)	0.8 ~16 bar		
Temperature (min/max)	+1 °C ~ +80 °C		
Safety Class	IP 65		
Condensate Feed	G3/4"(NPT 3/4") x 3 point		
Venting Line	G3/4"(NPT 3/4")		
Condensate Discharge	G1/2"(NPT 1/2")		
Weight (empty)	6.0 kg		
Scope of Application	Oil-Free Condensate or Oil-Contaminated Condensate		
Material	Housing	Aluminum, Hard coated	
	O-ring	NBR	
	Diaphragm	AU	
	PCB Board Casing	ABS	

	Climatic zone	Peak compressor performance m <sup>3</sup> /min	Peak dryer performance m <sup>3</sup> /min	Peak filter performance m <sup>3</sup> /min
<b>DM-500</b>	Green	570	1140	.
	Blue	500	1000	.
	Red	350	700	.

\***Green** -Dry and cool climate(such as in Northern Europe, Canada, Northern states of the USA, Central Asia)

\***Blue** -temperate climate(such as in Central and Southern Europe, Central America)

\***Red** -humid, tropical climate(such as in the coastal regions of South-East Asia, Oceania, Amazon and Congo regions)

### Discharge Capacity of DRAIN MASTER S (DM-500)

Working pressure	1 bar	2 bar	3 bar	4 bar	5 bar	6 bar	7 bar
Peak load (l/h)	400	460	520	590	670	750	850

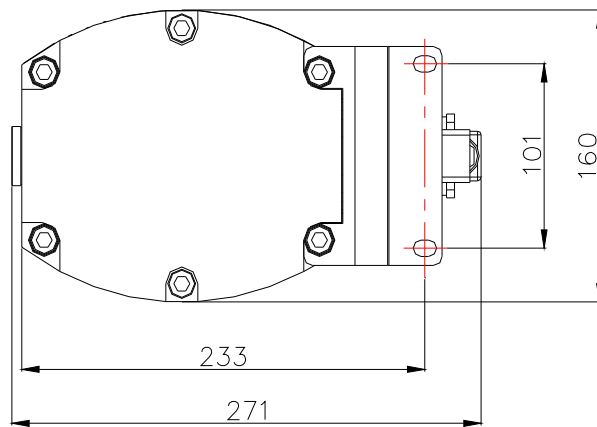
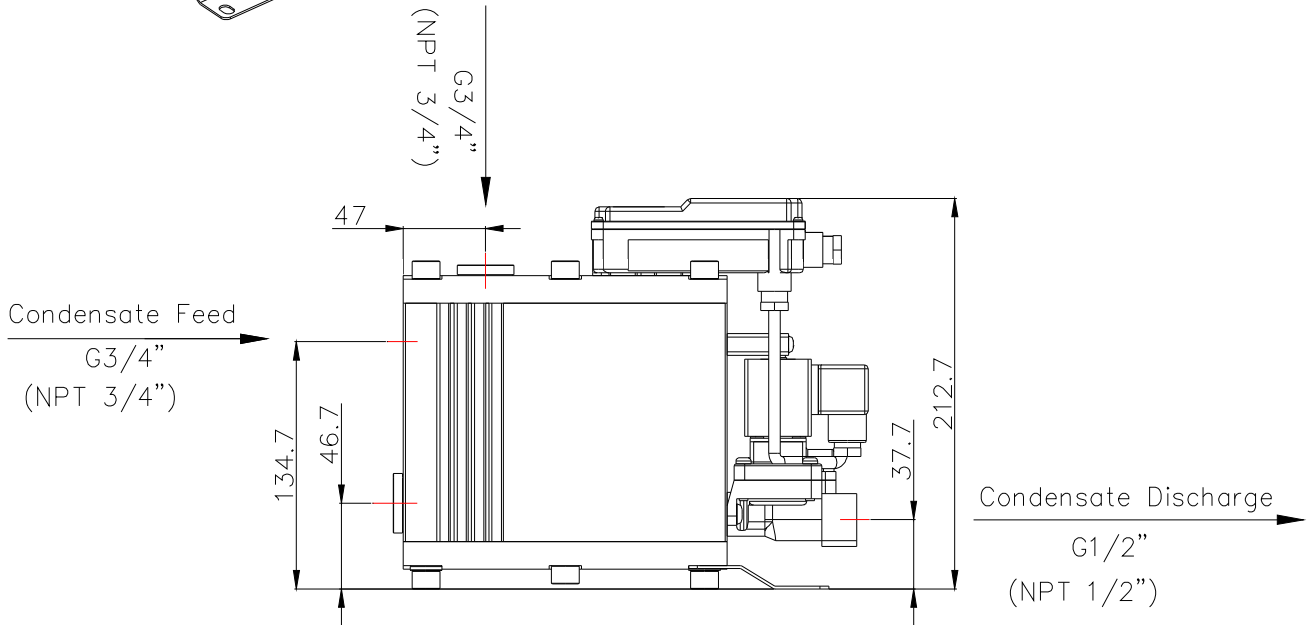
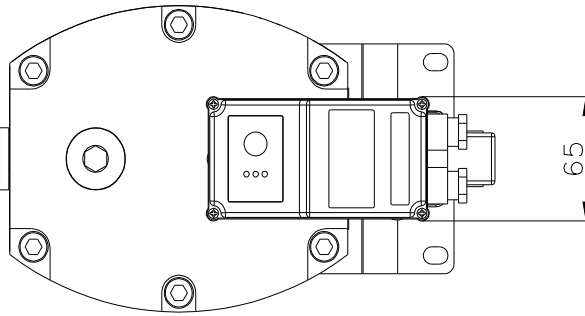
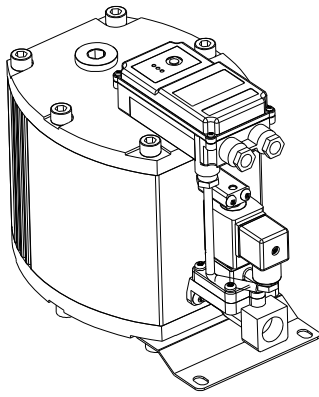
Voltage	Standard	100~240Vac(Free Voltage) / 50~60Hz	
	Order Voltages	24Vac.48Vac /24Vdc.48Vdc	
Power Input	15 VA	Fuse protection(normal lag)	0.5 A
Cable cross section	Ø 6.0 ~ 8.0 mm; 3 x 0.75mm		

### Thermostatically controlled heating (Option)

Designation	Heater Unit	
Order Ref.	A DM00-1	A DM00-2
Power	220Vac/50~60Hz/125W	110Vac/50~60Hz/125W
Operating Pressure(max)	25 bar	
with heating unit and proper insulation; down to -25 °C		

**DIMENSION**

**DRAIN MASTER S (DM-500)**



Subject to technical changes without prior notice, errors not excluded.



Enclosure type:  
4X "Watertight"

ISO 9001:2008 / ISO 14001 : 2004  
EUROPE CE CERTIFICATION

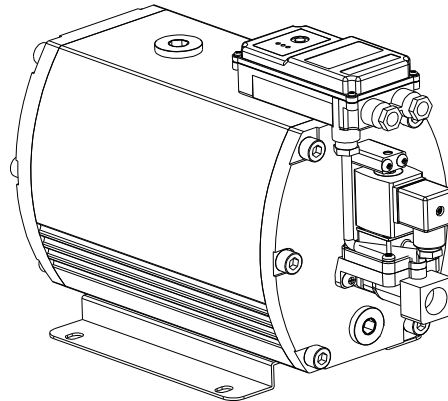


## Technical Data

## Condensate Auto Drain Trap

## Standard

**Model : DM-1500**





# Condensate Auto Drain Trap

**DRAIN MASTER S**

## TECHNICAL DATA

<b>Model</b>	<b>DM - 1500</b>		
Order Ref.	DM 1500 CA		
Working Pressure (min/max)	0.8 ~16 bar		
Temperature (min/max)	+1 °C ~ +80 °C		
Safety Class	IP 65		
Condensate Feed	G3/4"(NPT 3/4") x 2 point, G1"(NPT 1") x 1 point		
Venting Line	G3/4"(NPT 3/4")		
Condensate Discharge	G1/2"(NPT 1/2")		
Weight (empty)	7.5 kg		
Scope of Application	Oil-Free Condensate or Oil-Contaminated Condensate		
Material	Housing	Aluminum, Hard coated	
	O-ring	NBR	
	Diaphragm	AU	
	PCB Board Casing	ABS	

	Climatic zone	Peak compressor performance m <sup>3</sup> /min	Peak dryer performance m <sup>3</sup> /min	Peak filter performance m <sup>3</sup> /min
<b>DM-1500</b>	Green	1750	3500	.
	Blue	1500	3000	.
	Red	1050	2100	.

\***Green** –Dry and cool climate(such as in Northern Europe, Canada, Northern states of the USA, Central Asia)

\***Blue** –temperate climate(such as in Central and Southern Europe, Central America)

\***Red** –humid, tropical climate(such as in the coastal regions of South-East Asia, Oceania, Amazon and Congo regions)

## Discharge Capacity of DRAIN MASTER S (DM-1500)

Working pressure	1 bar	2 bar	3 bar	4 bar	5 bar	6 bar	7 bar
Peak load (l/h)	950	1,150	1,320	1,400	1,460	1,580	1,700

Voltage	Standard	100~240Vac(Free Voltage) / 50~60Hz	
	Order Voltages	24Vac.48Vac /24Vdc.48Vdc	
Power Input	15 VA	Fuse protection(normal lag)	0.5 A
Cable cross section	Ø 6.0 ~ 8.0 mm; 3 x 0.75mm		

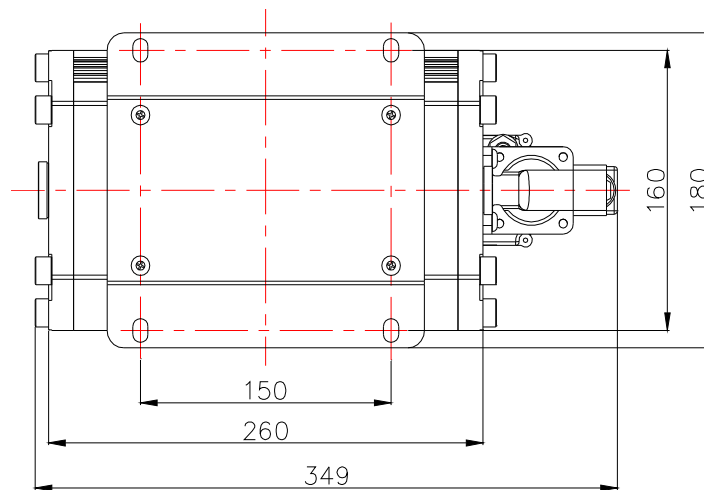
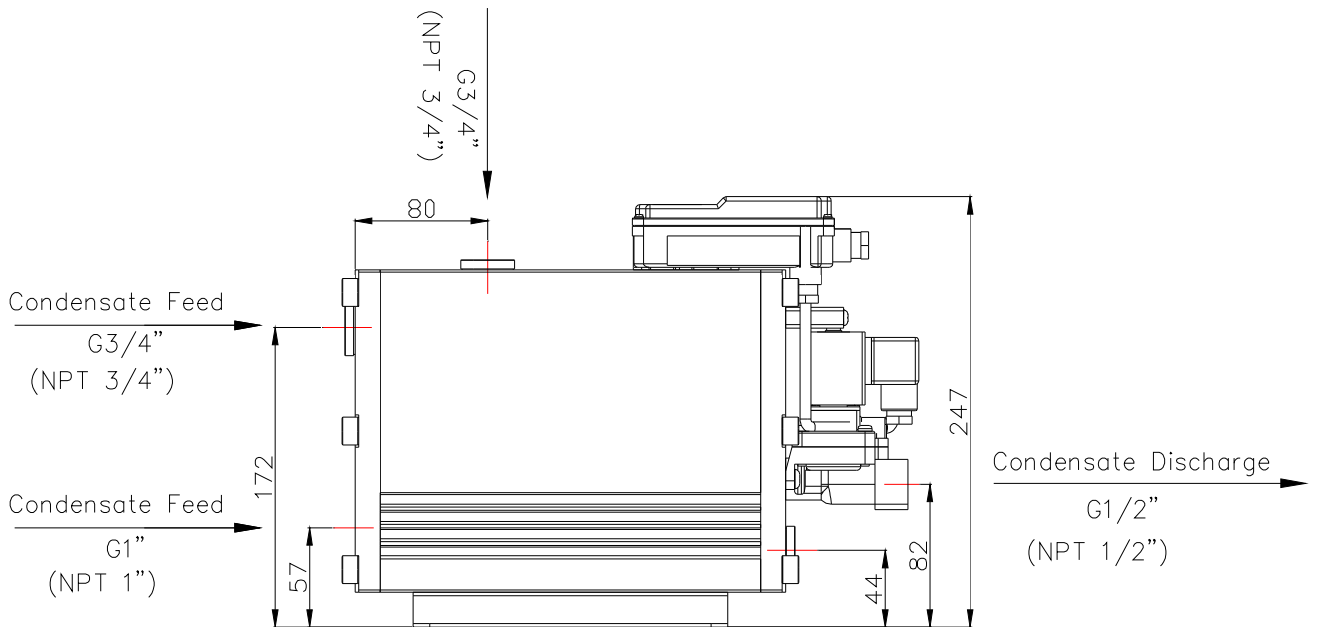
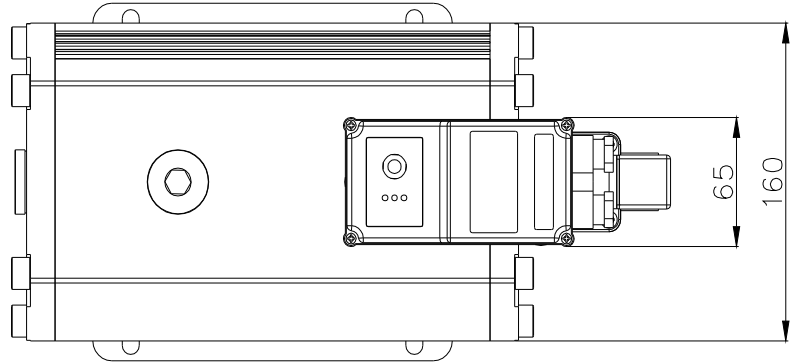
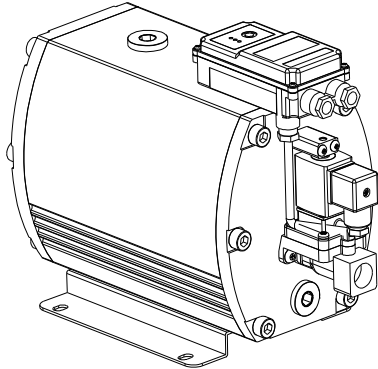
## Thermostatically controlled heating (Option)

Designation	Heater Unit	
Order Ref.	A DM00-1	A DM00-2
Power	220Vac/50~60Hz/125W	110Vac/50~60Hz/125W
Operating Pressure(max)	25 bar	

with heating unit and proper insulation; down to -25 °C

**DIMENSION**

**DRAIN MASTER S (DM-1500)**



Subject to technical changes without prior notice, errors not excluded.